



Portfolio



3	About HPdent
4-5	Mixing palettes, Mixing fluid
6-11	Premium Brushes
12-13	CLIP Abutment Tool, Composite Instruments
14-20	Ceramists MUST HAVES
21-23	Abrasives, Polishers, Discs
24 - 25	Blanks
26- 30	Model Management
31	HPdent SHOP

Stand out and be different.

It is easy for us to say that it is our quality which sets us apart.
But really it is about exceeding your expectations and challenging the existing standards.

To stand out, you cannot just follow, but you need to question the status quo!

Not only do we feel you need excellent products making your life easier, but also excellent services.
When calling us with a question on our products you deserve to get an answer from somebody who really knows that product, worked with it, or even better designed it himself.

When a new HPdent product is launched you can rest assured that it has been thoroughly tested by a group of some of the most wellknown CDTs on the globe. Other companies would call them „Opinion Leaders“, we take pride in calling them our friends.

You know how it is like when asking friends for their opinion, right? They will tell you the truth! Also if your idea is bad ...

Yes - we are proud to be different and it is our philosophy to remain being different.

Your  Team



Tray

New category reference for ceramic mixing trays

- light and smooth aluminum base
- a collaboration, mining the inner perspective of 7 master ceramists from around the world
- enorme Arbeitsfläche auf gehärtetem, black „pearl glass“
- smart water reservoir prevents spillage

Code
402-0010

Name (Content)
Tray



www.hp-dent.com/eng/downloads



CeraFirm- No Limits

The universal mixing system for all types of ceramic

- extremely firm ceramic mixes and lowest possible shrinkage
- for all HF and LF ceramics. Glycol free-no color influence
- time saving - no inbetween drying necessary
- range the viscosity of the ceramic by mixing Fluid + Add
- easy to layer with different consistencies
- structures are obtained when „over-layering“
- create structures and texture even before baking
- No Limits- Now YOU decide what is possible!

Code	Name (Content)
201-0000	CeraFirm Fluid (250 ml)
201-1000	CeraFirm Add (10 ml)
201-2000	CeraFirm Kit (250 ml Fluid + 10 ml Add)



www.hp-dent.com/eng/downloads

FUSIONbrush

The evolution of Kolinsky

- Premium Kolinsky + synthetic fibre reinforcement
- therefore enhanced stability of pure Kolinsky point
- sharp pointed tip
- lightweight, balanced aluminum handle
- replaceable, magnetic "quick-change" tip

* Tips fit screw-on brushes of other manufacturers

Code	Name (Content)
204-0008	FUSIONbrush #8
204-0006	FUSIONbrush #6
204-0004	FUSIONbrush #4
204-0002	FUSIONbrush #2
204-0009	FUSIONbrush #stain
204-0010	FUSIONbrush #opaque/glaze
204-1008	FUSIONbrush Tip #8 (2 pieces)
204-1006	FUSIONbrush Tip #6 (2 pieces)
204-1004	FUSIONbrush Tip #4 (2 pieces)
204-1002	FUSIONbrush Tip #2 (2 pieces)
204-1009	FUSIONbrush Tip #stain (2 pieces)
204-1010	FUSIONbrush Tip #opaque/glaze (2 pieces)



FUSIONbrush
Master Kit #2
204-2002



FUSIONbrush
Master Kit #4
204-2004

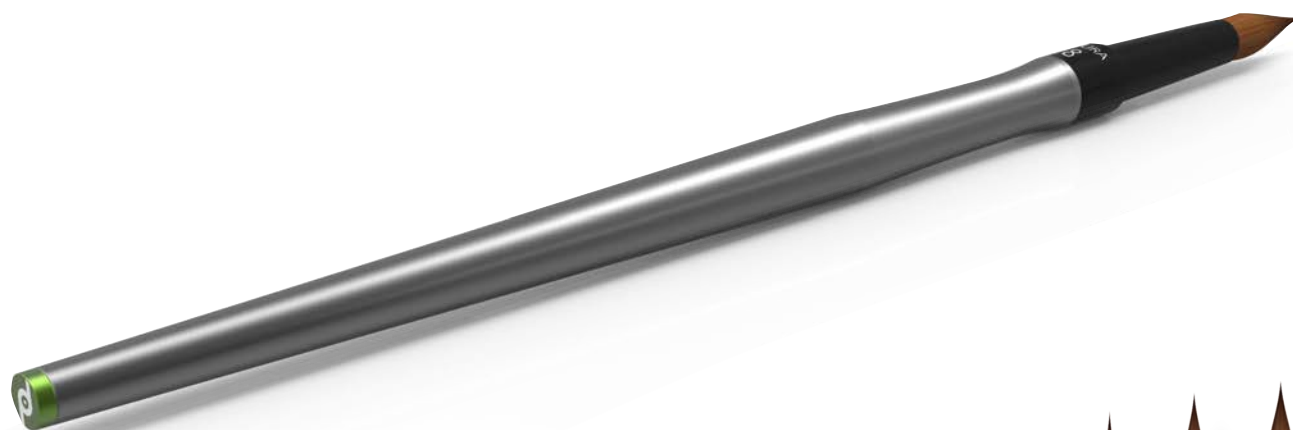


FUSIONbrush
Master Kit #6
204-2006



FUSIONbrush
Master Kit #8
204-2008

Code	Name (Content)
204-2000	FUSIONbrush - 4in1-Kit (FUSIONbrush #8 + Tip #6 + Tip #4 + Tip #2)
204-2008	FUSIONbrush - Master Kit #8 (FUSIONbrush #8 + FUSIONbrush stain + FUSIONbrush opaque/glaze)
204-2006	FUSIONbrush - Master Kit #6 (FUSIONbrush #6 + FUSIONbrush stain + FUSIONbrush opaque/glaze)
204-2004	FUSIONbrush - Master Kit #4 (FUSIONbrush #4 + FUSIONbrush stain + FUSIONbrush opaque/glaze)
204-2002	FUSIONbrush - Master Kit #2 (FUSIONbrush #2 + FUSIONbrush stain + FUSIONbrush opaque/glaze)



Watch the video



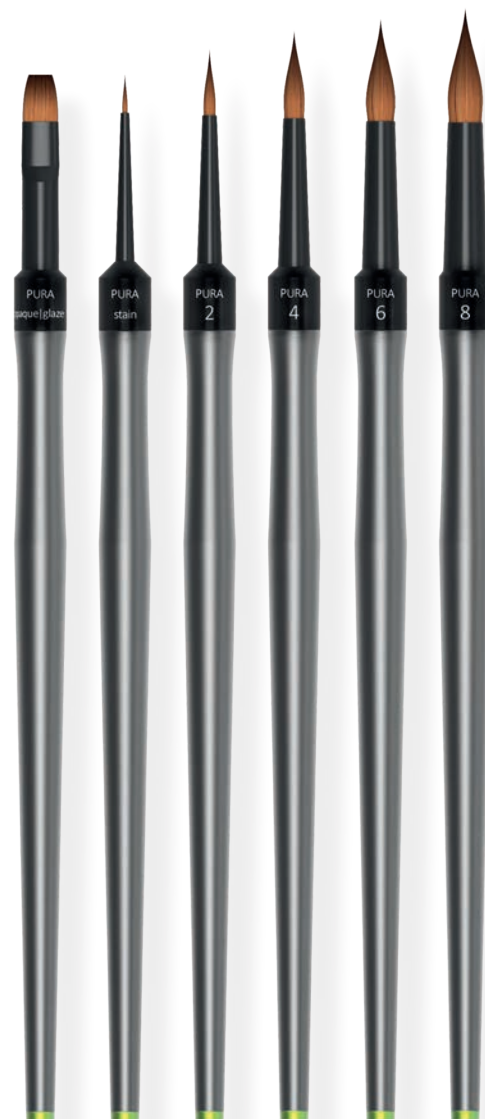
www.hp-dent.com/eng/downloads

PURAb^{brush}

The new standard

- Premium Kolinsky
- sharp pointed tip
- lightweight, balanced aluminum handle
- replaceable, magnetic „quick-change“ tip

* Tips fit screw-on brushes of other manufacturers



Code	Name (Content)
203-0008	PURAb ^{brush} #8
203-0006	PURAb ^{brush} #6
203-0004	PURAb ^{brush} #4
203-0002	PURAb ^{brush} #2
203-0009	PURAb ^{brush} #stain
203-0010	PURAb ^{brush} #opaque/glaze
203-1008	PURAb ^{brush} Tip #8 (2 pieces)
203-1006	PURAb ^{brush} Tip #6 (2 pieces)
203-1004	PURAb ^{brush} Tip #4 (2 pieces)
203-1002	PURAb ^{brush} Tip #2 (2 pieces)
203-1009	PURAb ^{brush} Tip #stain (2 pieces)
203-1010	PURAb ^{brush} Tip #opaque/glaze (2 pieces)



PURAb^{brush}

4in1-Kit

203-2000

+



+



+



PURAb^{brush}

Master Kit #2

203-2002



PURAb^{brush}

Master Kit #4

203-2004



PURAb^{brush}

Master Kit #6

203-2006



PURAb^{brush}

Master Kit #8

203-2008

Code

Name (Content)

203-2000

PURAb^{brush} - 4in1-Kit (PURAb^{brush} #8 + Tip #6 + Tip #4 + Tip #2)

203-2008

PURAb^{brush} - Master Kit #8 (PURAb^{brush} #8 + PURAb^{brush} stain + PURAb^{brush} opaque/glaze)

203-2006

PURAb^{brush} - Master Kit #6 (PURAb^{brush} #6 + PURAb^{brush} stain + PURAb^{brush} opaque/glaze)

203-2004

PURAb^{brush} - Master Kit #4 (PURAb^{brush} #4 + PURAb^{brush} stain + PURAb^{brush} opaque/glaze)

203-2002

PURAb^{brush} - Master Kit #2 (PURAb^{brush} #2 + PURAb^{brush} stain + PURAb^{brush} opaque/glaze)



Portfolio IV



NYLObrush

Premium Synthetic brush - redefined

- hybrid synthetic fibers
- ensures flexural strength of brush tip
- large water reservoir
- replaceable, magnetic „quick-change“ tip- compatible with FUSION- and PURAbrush

* Tips fit screw-on brushes of other manufacturers

Code	Name (Content)
210-0008	NYLObrush #8
210-0006	NYLObrush #6
210-0004	NYLObrush #4
210-0002	NYLObrush #2
210-0009	NYLObrush #stain
210-0010	NYLObrush #opaque/glaze
210-1008	NYLObrush Tip #8 (2 pieces)
210-1006	NYLObrush Tip #6 (2 pieces)
210-1004	NYLObrush Tip #4 (2 pieces)
210-1002	NYLObrush Tip #2 (2 pieces)
210-1009	NYLObrush Tip #stain (2 pieces)
210-1010	NYLObrush Tip #opaque/glaze (2 pieces)



NYLObrush

4in1-Kit

210-2000



NYLObrush

Master Kit #2

210-2002



NYLObrush

Master Kit #4

210-2004



NYLObrush

Master Kit #6

210-2006



NYLObrush

Master Kit #8

210-2008

Code	Name (Content)
210-2000	NYLObrush 4in1-Kit (NYLObrush #8 + Tip #6 + Tip #4 + Tip #2)
210-2008	NYLObrush - Master Kit #8 (NYLObrush #8 + NYLObrush stain + NYLObrush opaque/glaze)
210-2006	NYLObrush - Master Kit #6 (NYLObrush #8 + NYLObrush stain + NYLObrush opaque/glaze)
210-2004	NYLObrush - Master Kit #4 (NYLObrush #8 + NYLObrush stain + NYLObrush opaque/glaze)
210-2002	NYLObrush - Master Kit #2 (NYLObrush #8 + NYLObrush stain + NYLObrush opaque/glaze)



CLIP by Hans-Jürgen Joit

Smart and easy handling of hybrid - abutments

- constant pressure during hardening
- fits all implant types
- easy, hands-free working
- avoiding rotation and fail positioning during cementation
- individually codable inserts enable precise positioning using Putty material

Code
309-0000

Name (Content)
CLIP



COMPOSITE
BUILD
209-1001



COMPOSITE
TATTOO
209-1002



COMPOSITE
BALL
209-1003

COMPOSITE by Nena v. Hajmasy

Composite-Instrument-Kit

- Natural hairmix brush BUILD for naturelike buildup of composites
- Instrument TATTOO creates structure and allows tattooing internal color effects using stains
- Instrument BALL mimics natural gingiva structure and easily creates occlusal surfaces

* Tips fit screw-on brushes of other manufacturers

Code	Name (Content)
209-1000	COMPOSITE Kit by Nena (Instruments Build, Tattoo, Ball)
209-1001	COMPOSITE by Nena, Tip BUILD, (2 pieces)
209-1002	COMPOSITE by Nena, Tip TATTOO, (2 pieces)
209-1003	COMPOSITE by Nena, Tip BALL, (2 pieces)



TriVest

The update of investment material

- 3in1 - Pressables, castables, refractory dies
- extremely smooth surface
- excellent accuracy and edge definition
- no reaction layer- no covering oxide layer
- razor-sharp margins
- traditional or speed heat
- suitable for 3D printed crown and bridge materials

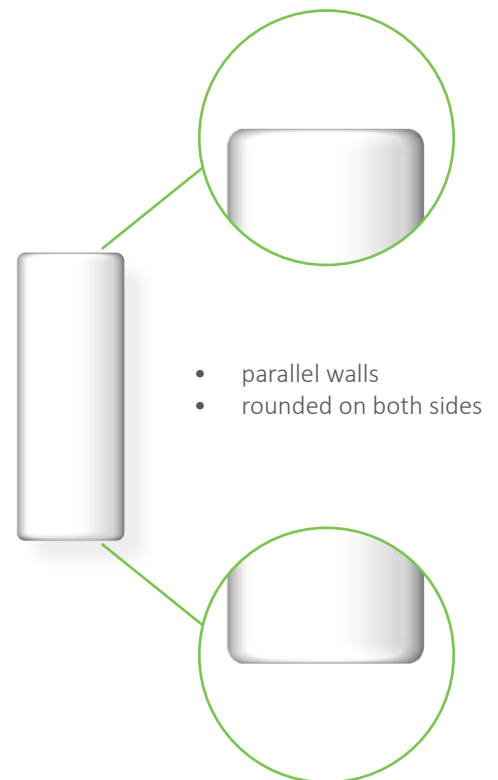
Code	Name (Content)
222-0000	TriVest Premium Investment material (40 x 100 g incl. Liquid press (750 ml) and Liquid cast 250 ml))
222-0750	TriVest Liquid press (750 ml)
222-0250	TriVest Liquid cast (250 ml)



TriVest Plunger

The smart Investment-Plungers

- one-way-plunger Ø 13 mm
- extremely smooth surface
- rounded edges on both sides
- no tilting, no mislead pressings
- enormous compressive strength



Code
222-0050

Name (Content)
TriVest Plunger (50 pieces)



SuperPeg II

The ultimate Ceramic Firing Paste Peg Putty

- conveniently stabilizes ceramic restorations on firing pegs
- zero clean-up required - a blast of compressed air is enough
- eliminates divesting by way of scraping out and sand blasting
- suitable for CAD crystallization firings up to 1.300 °C
- no drying time required

Code	Name (Content)
8505	Super Peg II, Firing paste, 12 ml (1 piece)
8510	Super Peg II, Firing paste, 12 ml, (4 pieces)



TruePrep

Natural die shade spacer system

- accurate shade emulation of the prepared tooth structure
- keyed to the IPS e.max® Natural Die Material Shade Guide®
- fast 15-second drying time

Code	Name (Content)
7500	TruePrep Spacer Kit, HD1-9
7501	TruePrep Spacer, 7 ml, HD1
7502	TruePrep Spacer, 7 ml, HD2
7503	TruePrep Spacer, 7 ml, HD3
7504	TruePrep Spacer, 7 ml, HD4
7505	TruePrep Spacer, 7 ml, HD5
7506	TruePrep Spacer, 7 ml, HD6
7507	TruePrep Spacer, 7 ml, HD7
7508	TruePrep Spacer, 7 ml, HD8
7509	TruePrep Spacer, 7 ml, HD9
7510	TruePrep Thinner, 7 ml



Opalescent Water bowl

- water in it's most beautiful opalescent form
- japanese glass-craftsmanship meets dental ceramics
- a rare jewel for your working bench

Code
7005

Name (Content)
Opalescent water bowl



FixGel

Temporary Holding Gel
for Ceramics, Zirconia und PFM

- firmly holds veneers, copings and crowns on the die
- 100% organic - burns residue free
- slight white color allows visual control
- no drying time

Code
200-0000

Name (Content)
FixGel (2 x 3,5 ml)



ContourCheck™

Visualizes surface structures at a glance

- clean application
- super-thin coating of 3 µm
- easy clean off with steamer or wet paper towel
- fast 5 seconds-drying time

Code
7700

Name (Content)
ContourCheck, 7 ml, silver



YelloStone

Next generation diamond abrasive

Zirconia, Lithiumsiliates and all types of ceramics and composite

- highly abrasive
- smooth surface pattern
- highly durable
- least possible generation of heat

* max. 20.000 min⁻¹

Code	Name (Content)
206-0001	YelloStone, barrel small (1 piece)
206-0002	YelloStone, cone small (1 piece)
206-0003	YelloStone, disc small (1 piece)
206-0004	YelloStone, disc large (1 piece)
206-0005	YelloStone, thin (tapered) (1 piece)



P3.Polish

Ultimate diamond polishers

Zirconia, Lithiumsulfates, all types of ceramics and composite

- first 1-step polishing system
- pre-polish to high-lustre without changing tools
- highly durable
- least generation of heat

* 6.000-20.000 min⁻¹

Code	Name (Content)
207-0001	P3.Polish, point (1 piece)
207-0002	P3.Polish, disc small (1 piece)
207-0003	P3.Polish, disc large (1 piece)
207-0004	P3.Polish, thin (tapered) (1 piece)



Neo.Cut

Next generation flexible diamond cutting discs

- double layer fibre re-inforced
- enormous cutting ability
- minimal wear and tear
- minimal generation of heat
- colored mandrell to tell apart different types

*max. 50.000 min⁻¹

Code	Name (Content)
205-0001	Neo.Cut (Zir, LiSi, Cer), 10 pieces
205-0003	Neo.Cut (Alloy), 20 pieces
205-0004	Neo.Cut (Alloy, Investment), 20 pieces



Temp Esthetic for
anterior temporaries
soon available



Wax Press™ Esthetic

Dentine shaded histo-anatomic surface in two easy steps

Code	Name (Content)
10008-16	Wax Press™ Esthetic 98, Dentin-light, 16 mm
10008-20	Wax Press™ Esthetic 98, Dentin-light, 20 mm
10009-16	Wax Press™ Esthetic 98, Dentin-medium, 16 mm
10009-20	Wax Press™ Esthetic 98, Dentin-medium, 20 mm
10010-16	Wax Press™ Esthetic 98, Dentin-deep, 16 mm
10010-20	Wax Press™ Esthetic 98, Dentin-deep, 20 mm
30088-16	Wax Press™ Esthetic 95, Dentin-light, 16 mm
30088-20	Wax Press™ Esthetic 95, Dentin-light, 20 mm
30089-16	Wax Press™ Esthetic 95, Dentin-medium, 16 mm
30089-20	Wax Press™ Esthetic 95, Dentin-medium, 20 mm
30090-16	Wax Press™ Esthetic 95, Dentin-deep, 16 mm
30090-20	Wax Press™ Esthetic 95, Dentin-deep, 20 mm
20088-13	Wax Press™ Esthetic 71, Dentin-light, 13 mm
20088-20	Wax Press™ Esthetic 71, Dentin-light, 20 mm
20089-13	Wax Press™ Esthetic 71, Dentin-medium, 13 mm
20089-20	Wax Press™ Esthetic 71, Dentin-medium, 20 mm
20090-13	Wax Press™ Esthetic 71, Dentin-deep, 13 mm
20090-20	Wax Press™ Esthetic 71, Dentin-deep, 20 mm
20826	Wax Press™ Addition Wax, Clear incisal (20 g)
20828	Wax Press™ Addition Wax, Dentin-deep (20 g)
20830	Wax Press™ Addition Wax, Dentin-light (20 g)
20832	Wax Press™ Addition Wax, Dentin-medium (20 g)



Wax Press™

Optimized for intricate high speed milling

- manufacture copings and bridges for burnout techniques
- eliminates gumming up of drill bits
- rigid material eliminates shrinkage and warping
- burns out clean without residue

Wax Press™ Addition Wax

Digitally waxing process synergized

- post-milled adjustment wax
- melting point and color keyed to Wax Press
- premium crown and bridge wax properties
- organic formula, burns residue free

Code	Name (Content)
10002-16	Wax Press™ 98, Beige, 16 mm
10002-20	Wax Press™ 98, Beige, 20 mm
10004-16	Wax Press™ 98, Grey, 16 mm
10004-20	Wax Press™ 98, Grey, 20 mm
30082-16	Wax Press™ 95, Beige, 16 mm
30082-20	Wax Press™ 95, Beige, 20 mm
30080-16	Wax Press™ 95, Grey, 16 mm
30080-20	Wax Press™ 95, Grey, 20 mm
20082-13	Wax Press™ 71, Beige, 13 mm
20082-20	Wax Press™ 71, Beige, 20 mm
20080-13	Wax Press™ 71, Grey, 13 mm
20080-20	Wax Press™ 71, Grey, 20 mm
20820	Wax Press™ Addition Wax, Beige (20 g)
20822	Wax Press™ Addition Wax, Grey (20 g)



ModelSep

Precise master models

- offers clean separation
- leaves no film
- dries on contact - no drying time required
- works on all stones incl. resin enhanced stones

Code	Name (Content)
7065	ModelSep Spray (236 ml)
7066	ModelSep Refill (946 ml + 236 ml Spray bottle empty)



Surfactant

Bubble free models and casts

- reduces surface tension on wax and impressions
- works on Polyether (i.e. Impregum™) and Alginate
- fine mist doesn't require drying time
- allows gypsum + investment to run smoothly into all areas
- non-contaminating and alcohol free

Code	Name (Content)
7060	Surfactant Spray (236 ml)
7061	Surfactant Refill (946 ml + 236 ml Spray bottle empty)



SureFit

Accuracy accomplished

- excellent flow properties for precise application
- creates a hard, dense surface
- fast 15-second drying time
- available in 7 colors

Code	Name (Content)
7151	SureFit Die spacer, Blue (15 ml)
7152	SureFit Die spacer, Grey (15 ml)
7153	SureFit Die spacer, Thinner (15 ml)
7156	SureFit Die spacer, Dentine (15 ml)
7157	SureFit Die spacer, Yellow (15 ml)
7158	SureFit Die spacer, Red (15 ml)
7159	SureFit Die spacer, Gold (15 ml)
7160	SureFit Die spacer, Silver (15 ml)
7162	SureFit Die spacer Kit, Gold/Silver/Thinner (each 15 ml)
7163	SureFit Die spacer Kit, Blue/Red/Thinner (each 15 ml)



MS1

Die Sealer and Model Hardener

- protects margins from chipping and abrasion
- 0 µm ensures zero layer build-up
- fast 15- second drying time

MS3

The unique 3in1 Separator

- Die Lube, Ceramic- and Composite Separator
- non-oily for vital looking ceramic restorations
- 0 µm layer, fast 10 second drying time

Code	Name (Content)
7169	MS1 Master Die Sealer/Model Hardener (30 ml)
7176	MS1 Master Die Sealer/Model Hardener (236 ml Refill + 30 ml bottle empty)
7180	MS3 Master Separator (30 ml)
7183	MS3 Master Separator (236 ml Refill + 30 ml bottle empty)



VersaGlue

The Dental Adhesive in 3 viscosities

- reliably glues stone, metal, resin and ceramics
- precise application for minimal waste
- non-clogging application tip
- extended shelf life

Code	Name (Content)
2025	VersaGlue PX-4, thin (28 g)
2026	VersaGlue PX-40, medium (28 g)
2027	VersaGlue PX-400, thick (28 g)



HPdent online

www.hp-dent.com

- detailed info on our products
- technical details, MSDS safety data sheets - all at a glance
- product videos
- Find your regional HPdent dealer
- ant to try our products - simply order a sample online



No respect for the status quo